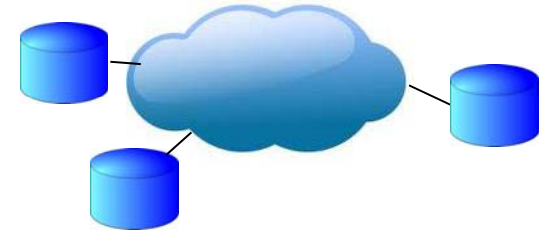

Push Radio

With Automation Interface



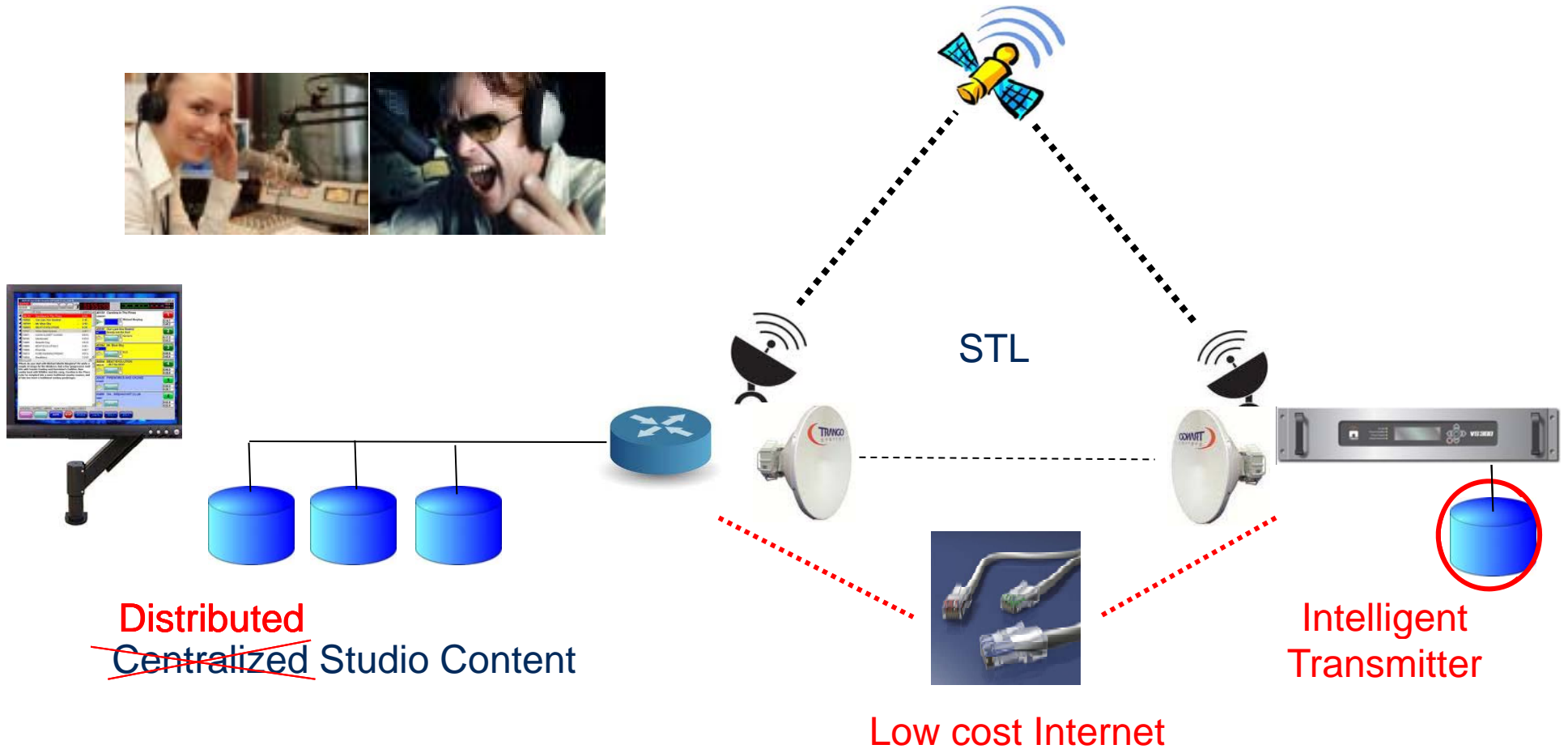
Making Digital Radio **Work.**

Push Radio: A new program distribution model



- Content is stored in the transmitter and playlists executed from there.
- Useful for educational / religious networks with many geographically distributed transmitters.
 - Content is sent via public internet as files not real-time.
 - Eliminates expensive satellite costs.
- Allows localism as different content can be sent to different transmitters.
- The storage and playout system is standard in VS.

Push Radio Studio/Transmit Model



nug *Push* Radio

Making Digital Radio **Work.**

New:  ENCO

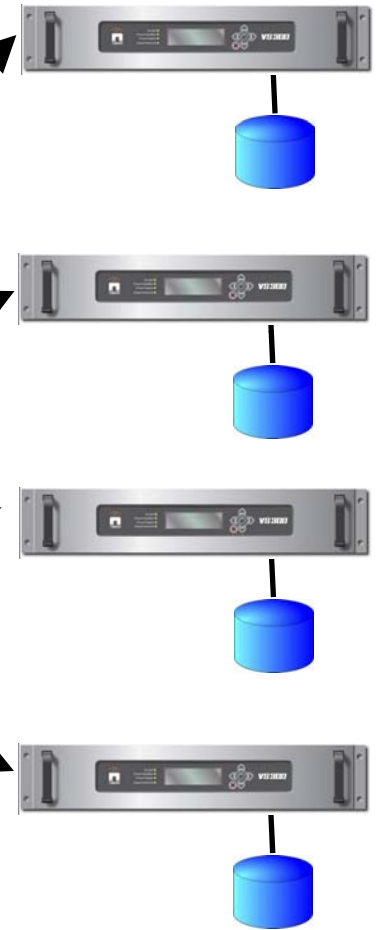
PUSHRADIO™
Interface



Studios



Public Internet



 *Push* Radio

Making Digital Radio **Work.**

ENCO Push Radio Interface



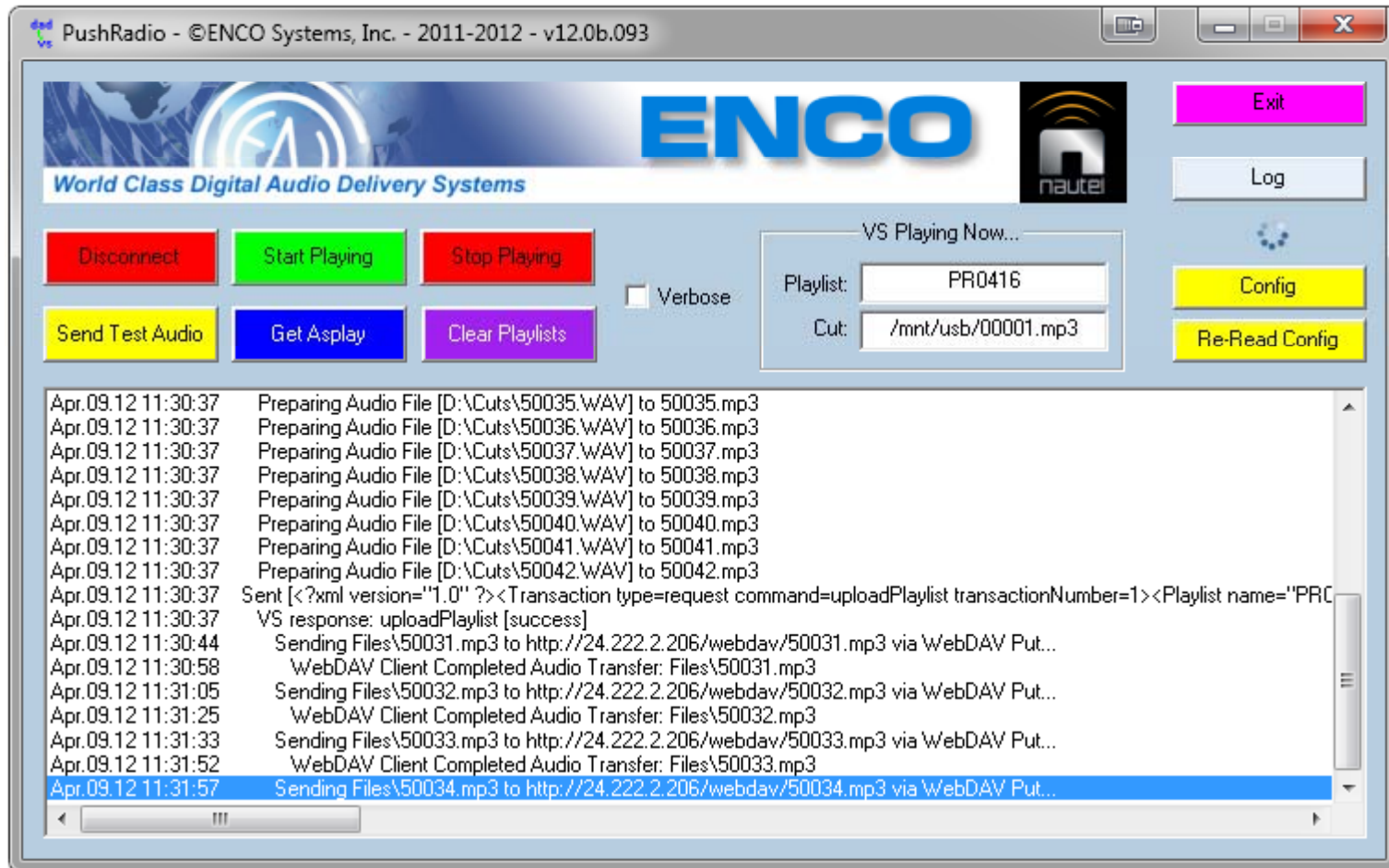
Developed by ENCO, a leader in program automation.

- Interfaces with the ENCO DAD Automation
- Connects to multiple Nautel transmitters via the internet
- Updates content files and playlists on the transmitter
- Retrieves the “as played” logs, and reconciles them with the music and traffic schedulers
- Can send different content and playlists to different transmitters for localism

ENCO Push Radio Interface



ENCO Push Radio Interface



ENCO Push Radio Interface

The screenshot displays the ENCO Push Radio interface, which is divided into several functional sections:

- Date & Time:** Shows the current date as Mon Apr 9 2012 and time as 09:52:35. A red button indicates the Scheduler is Off.
- Transmitter Configuration:** Displays the current power output as 0 W, the mode as FM, and the frequency as 98.10 MHz. It also shows a Reflected power of 0 W and a Set Point of 8.0 W. A dropdown menu is set to Preset: PR Preset 1.
- Exciter:** Shows the Active Exciter as Internal and the FM Modulation level at 31.3% on a scale from 0% to 100%.
- Playlist Manager:** This section is active and contains three sub-tables:
 - Playlists:** A table with columns Type and Name, listing Playlists 1 through 4 with names PRD+16, PRD+17, PRD+18, and PRD+19.
 - Playlist Contents:** A table with columns # and Path, showing items 8 through 11 with paths like 00004.mp3, 00003.mp3, 00002.mp3, and 00001.mp3.
 - Available Files on USB:** A list of files including 00001.mp3 through 00008.mp3, and a file named TestTone.wav.
- Bottom Control Bar:** Includes buttons for RF On/Off (currently Off), Menu, Status, Logs, Local/Remote (currently Local), Reset, and Log Out. A status indicator shows "Logged in as: nautel".

Benefits of the Push Radio model

- Reduces distribution costs (eliminates satellite expense)
- Improves reliability (net can die, you're still on air)
- Adds localism back (think weather, news & commercials)
- Works with VS initially, and NV and NX soon.
- See it in the Nautel and ENCO booths
- To be sold by ENCO, available soon!



Thank You



Making Digital Radio **Work.**

Nautel Major Product Families

NXSeries **MW**

25kW – 2.0MW



V Series **FM**

300W – 2.5kW



Advanced User Interface (AU)



NV Series **FM**

3.5kW – 88kW



nug *Push* Radio

Making Digital Radio **Work.**