

# Repack Victim

How to Know, What to Do, and  
Timetable for Doing It

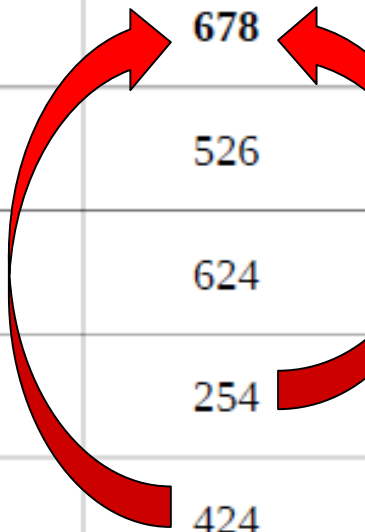
# Repack Agenda

- Who is affected?...by the numbers
- It's all about "RFR"
- Where can you go?
- Site considerations: STL, Intermod, DAs, licensing
- Costs and Reimbursement
- Timetable
- Resources – FCC, NAB, local SBE
- Post Repack Considerations



**Summary of affected stations:**

	Only Considering TV Stations Going Off-air	Only Considering TV Stations Changing Channels	Combined Total
<b>Number of Affected FM Transmitters</b>	<b>115</b>	<b>629</b>	<b>678</b>
Number of TV Transmitters Affecting at Least 1 FM	74	452	526
Number of TV Transmitters NOT Affecting FM	79	545	624
Affected FM stations with an off-site auxiliary facility	62	237	254
Affected FM stations without an off-site auxiliary facility	53	392	424
FM stations in common aperture with TV antenna	41	135	154
FM stations considered that were NOT deemed to be affected	10,738	10,224	10,175



Source: Report for NAB by VSoft Communications

**FM Repack Victims**

Making Digital Broadcasting **Work.**



# Severity of Impact

- > 100 FMs are affected by 3 or more TV stations, some by as many as 6
- It's all about RFR compliance:
  - Shared aperture antennas
  - Same tower aux hazard to workers



# Licensed Auxiliary Locations

- Check 73.1675 Auxiliary Antennas.
  - Note: 73.1680 Emergency antennas does not apply, STA possible.
- Consider:
  - Studio STL tower
  - AM tower (may need isocouplers)
  - Other FM/Communication towers – yours or competitor's
  - Other Structures—buildings, water towers, etc.



# Site Considerations

- Maintain 1 mv contour
- STL considerations
- Intermod, harmonics, LTE interference
- Multi station aux, e.g. 4 Times Square
- Long term viability
- File application as early as possible

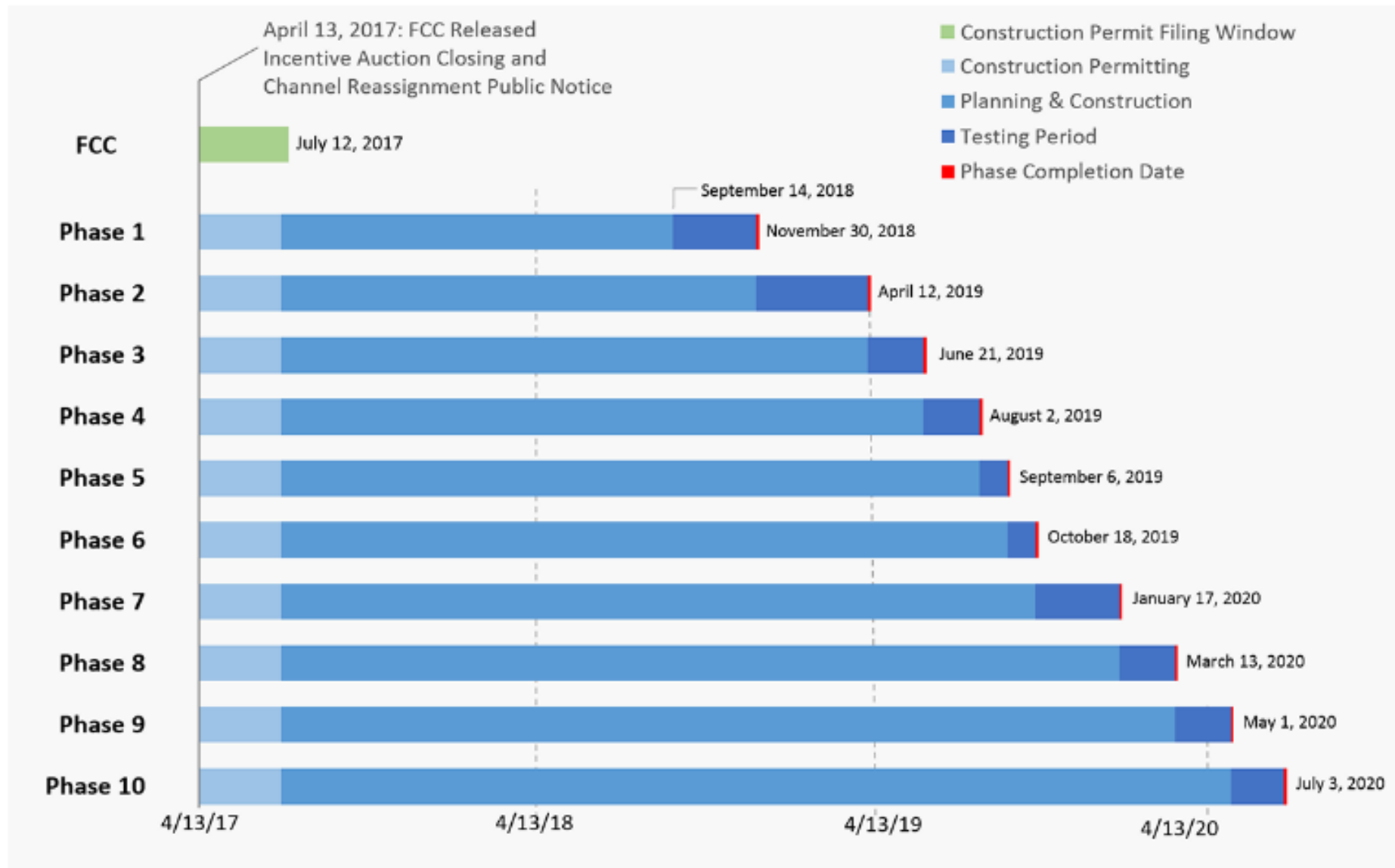


# Costs: The Innocent Bystanders

- \$1.75 B originally allocated (TV only)
- Congress approved additional \$1.0 B
  - \$600M first year, \$400M second year
  - (Up to)\$50M to radio stations
  - \$50M / 424 stations\* = ~ \$118k per station
  - No reimbursement for lost revenue



\* Not counting stations with current aux facilities



Source: FCC Incentive Auction and Post Auction Transition



# Final Comments

- Project Management Skills
- Scarcity of tower crews
- Use the resources of your local SBE Chapter
- Communicate with local TV stations
- The Future: Get ready for more LTE!



# Summary

- Are you affected? Start planning now!
- Consider a site that is long term viable.
- File timely application for aux facilities (or STA).
- Discipline yourself and management on project management.
- Live or die by the Timetable!

# TinyURL Links

- VSoft report to NAB: [goo.gl/mG6vMP](http://goo.gl/mG6vMP)
- FCC Repack Timetable: [goo.gl/4U8tb9](http://goo.gl/4U8tb9)

# Thank You

# 49

*years of*  
**NAUTEL**

1969  
2018



FM Repack Victims

Making Digital Broadcasting **Work.**