

Products Update

Matt Herdon, Product Manager

Products Update

- NV^{LT} HD Upgrade
- Ethernet Update
- SNMP v2c
- AUI Roadmap

NV^{LT} HD Upgrade

- HD Upgrade kit available now from customer service
- Power capabilities equivalent to GV, incl. HD PowerBoost
- Field upgrade*
 - Software update
 - Hardware: new exciter with Exgine
 - Time to implement: 1+ hours depending on experience
- Pricing: contact customer service

**Some older models may have additional requirements*

HD Radio[®]



Ethernet Update

- For VS, NV^{LT}, and NX 3/5/10 transmitters
- Stabilizes connectivity and streaming quality
- Field upgrade
 - Software OS and tgz update
 - Time to implement: 1+ hours depending experience
- Availability: TBD – in field trials now



SNMP v2c Update

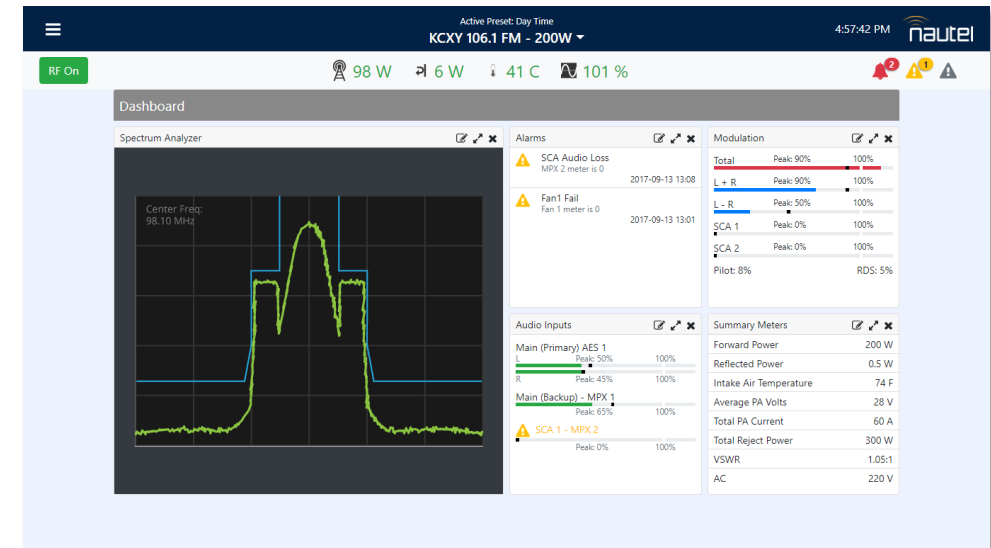
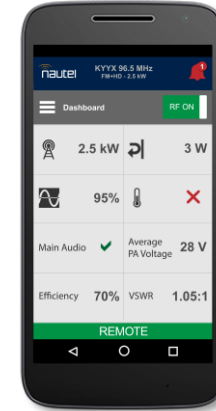
- For all Nautel transmitters
- Update for SNMP v2c compatibility
- New software
 - Time to implement: 30 minutes
- Availability: TBD – in final approval

The screenshot displays the Nautel transmitter control interface. At the top, there are three main sections: 'Date & Time' showing 'Fri Apr 6 2018' and '11:26:35' with a 'Scheduler: Off' indicator; 'Transmitter (CS VSHD Denver)' showing '0 W' power, '98.10 MHz' frequency, and '9.0 W' set point; and 'Exciter' showing 'Active Exciter: HD' and an 'FM Modulation' meter at 9.220% (100% scale). Below this is a 'User Settings' panel with a red 'X' icon. The left sidebar lists various settings: Network Setup, Email Configuration, Notifications, Engine Settings, **SNMP Configuration** (highlighted), Critical Parameters, External 10MHz, Spectrum Mask, Time Setup, NTP Servers, Nautel Phone Home, Call Sign/ID, and Audio Low Thresholds. The main area shows the 'SNMP Configuration' section with fields for 'Agent Port' (161), 'Read Community' (*****), 'Confirm' (*****), 'Write Community' (*****), and 'Confirm' (*****). There is also an unchecked checkbox for 'Enable Traps'. 'Apply' and 'Cancel' buttons are at the bottom right. The footer shows 'RF On' and 'RF Off' buttons, 'Logged in as: Nautel', and a navigation bar with 'Menu', 'Status', 'Logs', 'Local Remote', 'Reset', and 'Log Out' buttons.

AUI Roadmap

- **AUI Companion**
 - GV, NV, NX, NV^{LT}, and VS
 - All betas in final QA
 - Sign up, if you haven't already!
- **AUI 2**
 - New HTML AUI
 - Existing transmitters - 2019
 - Future transmitters

Details & demos in AUI Session this afternoon



Products Update

- NV^{LT} HD Upgrade – shipping now
- Ethernet Update – available soon
- HDMC+ – BTC support
- SNMP v2C – available soon
- AUI Roadmap
 - AUI Companion – beta now
 - AUI 2 – available 2019

HD Radio®



Making Digital Broadcasting **Work.**

Thank You

49

years of
NAUTEL

1969
2018